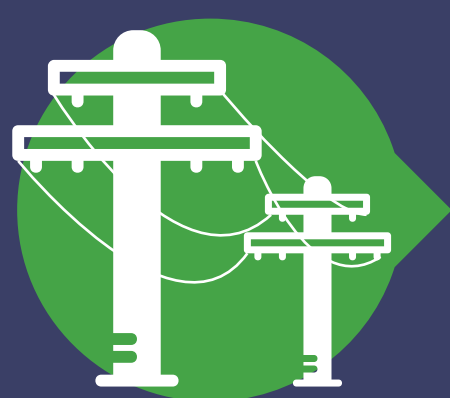


# How to Prevent Electrical Accidents on the Job

More than 4000 injuries and 300 deaths caused each year from electrical accidents, it's important for employers to encourage safe practices in the workplace.



## OVERHEAD POWER LINES

- Be aware of your surroundings at all times
- De-energize and ground power lines when working on them
- Only use a ladder made of non-conductive material (such as wood or fiberglass)

## BURIED POWER LINES

- Be aware of where power lines are buried
- Do not dig in areas where power lines are buried
- When working on buried power lines, de-energize and ground the lines



## EXTENSION CORDS

- Visually inspect all extension cords for signs of excessive wear before using
- Replace damaged extension cords
- Use the right extension cord, do not plug a grounded tool into a non-grounded cord
- Do not double-up on extension cords
- Always unplug cords by pulling on the plug, not the cord
- Buy extension cords with the OSHA safety seal

## POWER TOOLS

- Always plug power tools into ground-fault circuit interrupter (GFCI) outlets
- If no outlets are equipped with GFCI, then use an adapter or extension cord with GFCI
- Always inspect tools for excessive wear or damage
- Use power tools that are double-insulated



## YOU'VE BEEN INJURED IN AN ELECTRICAL ACCIDENT ON THE JOBSITE, WHAT NOW?



Seek immediate medical attention to treat your injuries



Contact a personal injury lawyer to review the facts of your case and discuss your legal options

**Contact Us: (816) 531-6006**

The Pottenger Law Firm, LLC | 816-531-6006  
919 W 47th St, Kansas City, MO 64112  
www.PottengerLaw.com

If you have been injured in an electrical accident on the jobsite, the first thing you should do is seek immediate medical attention to treat your injuries. Then you should contact a personal injury lawyer to review the facts of your case and discuss your legal options.

